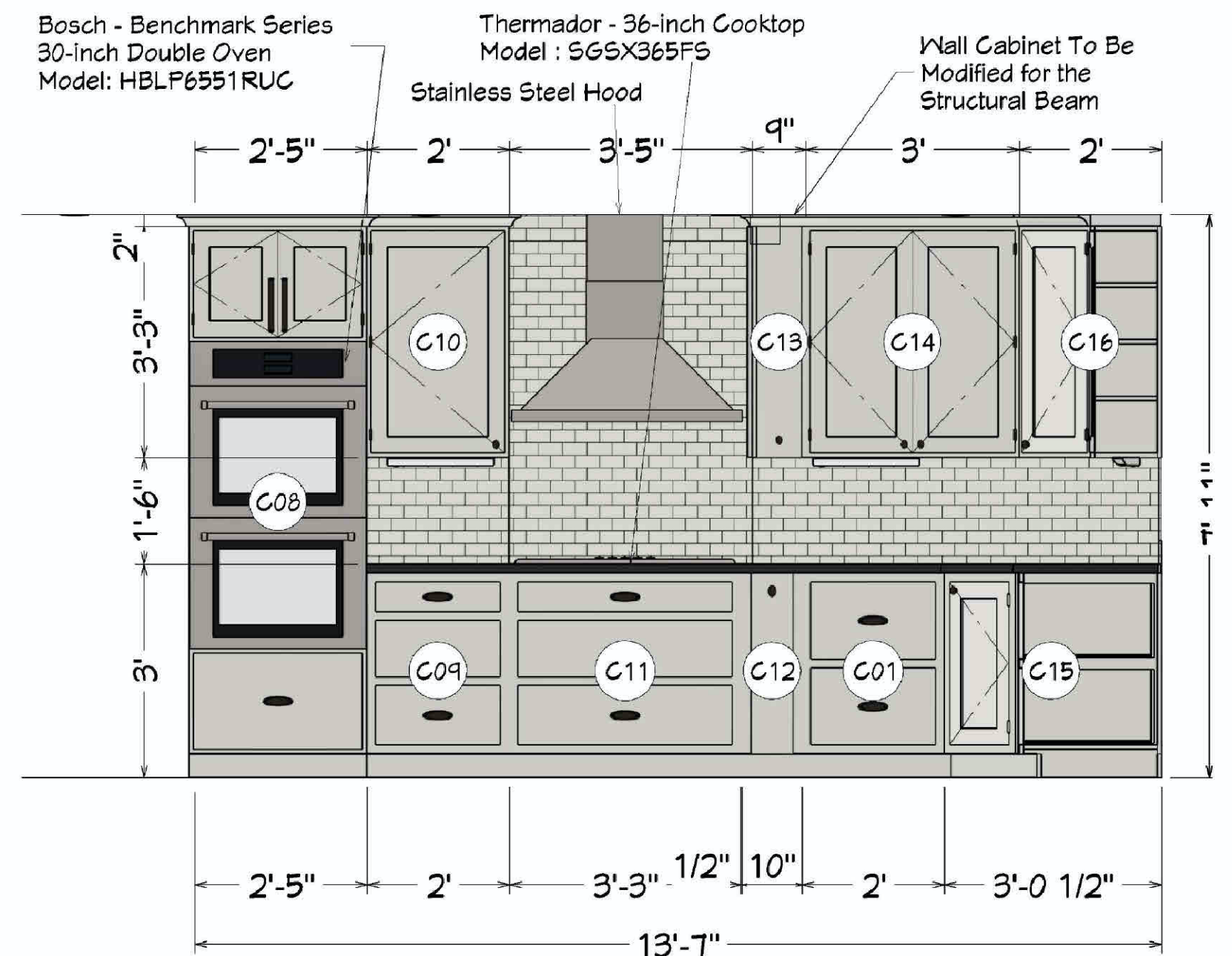


Kitchen View 1



Kitchen View 2

KITCHEN & MUDROOM FLOOR PLAN

Scale: 1 inch = 2 feet

CABINET NOTES:

1. ALL CABINETS CONFIRM STYLE COLOR AND FINISH WITH HOME OWNER PRIOR TO ORDERING OR BUILDING.
2. CONFIRM THE PHYSICAL DIMENSIONS OF EACH ROOM PRIOR TO ORDERING OR BUILDING THE CABINETRY.
3. CONFIRM THE SIZE OF APPLIANCE AND ADJUST CABINET DIMENSIONS PRIOR TO ORDERING OR BUILDING CABINETRY. CABINET DIMENSIONS, DOORS AND DRAWERS MAY NEED TO BE ADJUSTED FROM WHAT IS INDICATED ON THE CABINET SCHEDULE.
4. THE CABINETS IN THE KITCHEN ARE MANUFACTURED TALORA BY DECOR. THE DOOR STYLE IS PP622 AND THE DOOR STYLE IS PP430.
5. THE WALL CABINETS ABOVE THE WET BAR ARE RECESSED GLASS PANEL DOORS TO FOLLOW STYLE COLOR AND FINISH OF KITCHEN CABINETRY.
6. CABINET HARDWARE ARE EGG KNOB VERTICAL ON DOORS AND FLAT CUP PULL OF DRAWERS. THE PULLS AND KNOBS WILL BE BRUSHED ALUMINUM OR OIL RUBBED BRONZE DEPENDING ON THE CABINET. INSTALL HARDWARE ON SITE.
7. CROWN MOLDING WILL BE 2 INCH HEIGHT. INSTALL CROWN MOLDING ON SITE; MATCH CABINET COLOR; CONFIRM PROFILE AND DIMENSION WITH HOME OWNER.

APPLIANCES NOTES:

1. THE HOMEOWNER SHALL CONFIRM ALL THE APPLIANCES PRIOR TO PURCHASE AND INSTALLATION.
2. THE HOMEOWNER HAS CHOSEN THE FOLLOWING APPLIANCES FOR THE KITCHEN:
 - STOVETOP – MANUFACTURED BY THERMADOR MODEL NO:SGX365FS
 - DISHWASHER – MANUFACTURED BY BOSCH MODEL NO: 5HX65T55UC
 - FRENCH DOOR BOTTOM FREEZER REFRIGERATOR – MANUFACTURED BY BOSCH MODEL NO: B26FT509NS
 - 30-INCH DOUBLE OVEN – MANUFACTURED BY BOSCH, BENCHMARK SERIES, MODEL NO: HBLP651RUC
 - MICROWAVE - MANUFACTURED BY BOSCH MODEL NO: HMG80152UC
 - BEVERAGE REFRIGERATOR – MANUFACTURED BY DANBY MODEL NO: DBC2T60BLS

FINISH NOTES:

- RENDERINGS ARE NOT TO SCALE; ALL RENDERINGS ARE FOR ARTISTIC DEPICTION ONLY. PLAN UPDATES MAY NOT BE REFLECTED IN RENDERINGS. RENDERINGS SHALL NOT BE USED FOR CONSTRUCTION.
- FINAL FINISHES SHALL BE CONFIRMED WITH THE HOMEOWNER PRIOR TO PURCHASE OR INSTALLATION.

1. AS SHOWN IN THE RENDERINGS THE STRUCTURAL BEAM SHALL BE INCASED IN A DECORATIVE WOOD VENEER OF THE HOMEOWNER'S CHOICE.
2. WALL COLORS SHOWN IN THE RENDERINGS ARE BENJAMIN MOORE 2124-40 THUNDERCLOUD GRAY AND 2127-30 GRAVEL GREY. THE HOMEOWNER WILL PICK FINAL COLORS DURING CONSTRUCTION.
3. AS DESIGNED THERE IS APPROXIMATELY 70 SQUARE FEET OF ITALIAN CARRARA MOSAIC TILE BY DATILE.
4. THE COUNTER TOPS SHOWN IN THE KITCHEN ARE 260 SQUARE FEET OF BLACK FLANNEL GRANITE BY CACTUS STONE AND 60 SQUARE FEET OF RAFAELLO DOLOMITE BY CACTUS STONE.

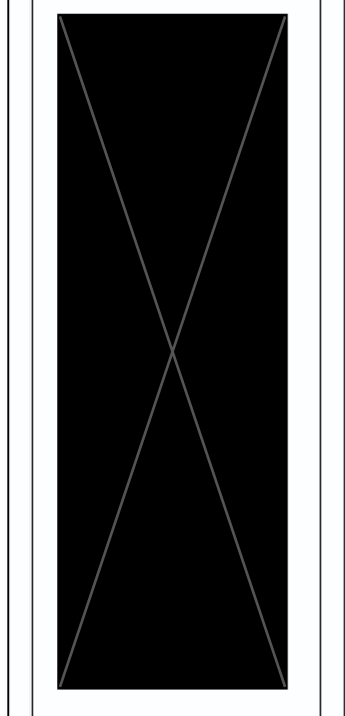
GENERAL NOTES AND SPECIFICATIONS

THE CONTRACTOR SHALL ASSUME FULL RESPONSIBILITY FOR ANY WORK KNOWINGLY PERFORMED CONTRARY TO SUCH LAWS, ORDINANCES, OR REGULATIONS. THE CONTRACTOR SHALL ALSO PERFORM COORDINATION WITH ALL UTILITIES AND STATE SERVICE AUTHORITIES.

WRITTEN DIMENSIONS ON THESE DRAWINGS SHALL HAVE PRECEDENCE OVER SCALED DIMENSIONS. THE GENERAL CONTRACTOR SHALL VERIFY AND IS RESPONSIBLE FOR ALL DIMENSIONS (INCLUDING ROUGH OPENINGS).

HOME DESIGN CONSULTING (HDC) SHALL NOT BE RESPONSIBLE FOR CONSTRUCTION MEANS AND METHODS, ACTS OR OMISSIONS OF THE CONTRACTOR OR SUBCONTRACTOR, OR FAILURE OF ANY OF THEM TO CARRY OUT WORK IN ACCORDANCE WITH THE LAYOUT PLANS OR THE REQUIREMENT BY STATE AND LOCAL CODE REQUIREMENTS. THE BURDEN OF COST AND LIABILITY FROM SUCH DEFECT UPON THE CONTRACTOR.

NUMBER	DATE	REVISION BY	DESCRIPTION



Floor Plan, Cross Sections & Notes

DRAWINGS PROVIDED BY:
Home Design Consulting

DATE:



SCALE:



SHEET:

D-1

CABINET SCHEDULE

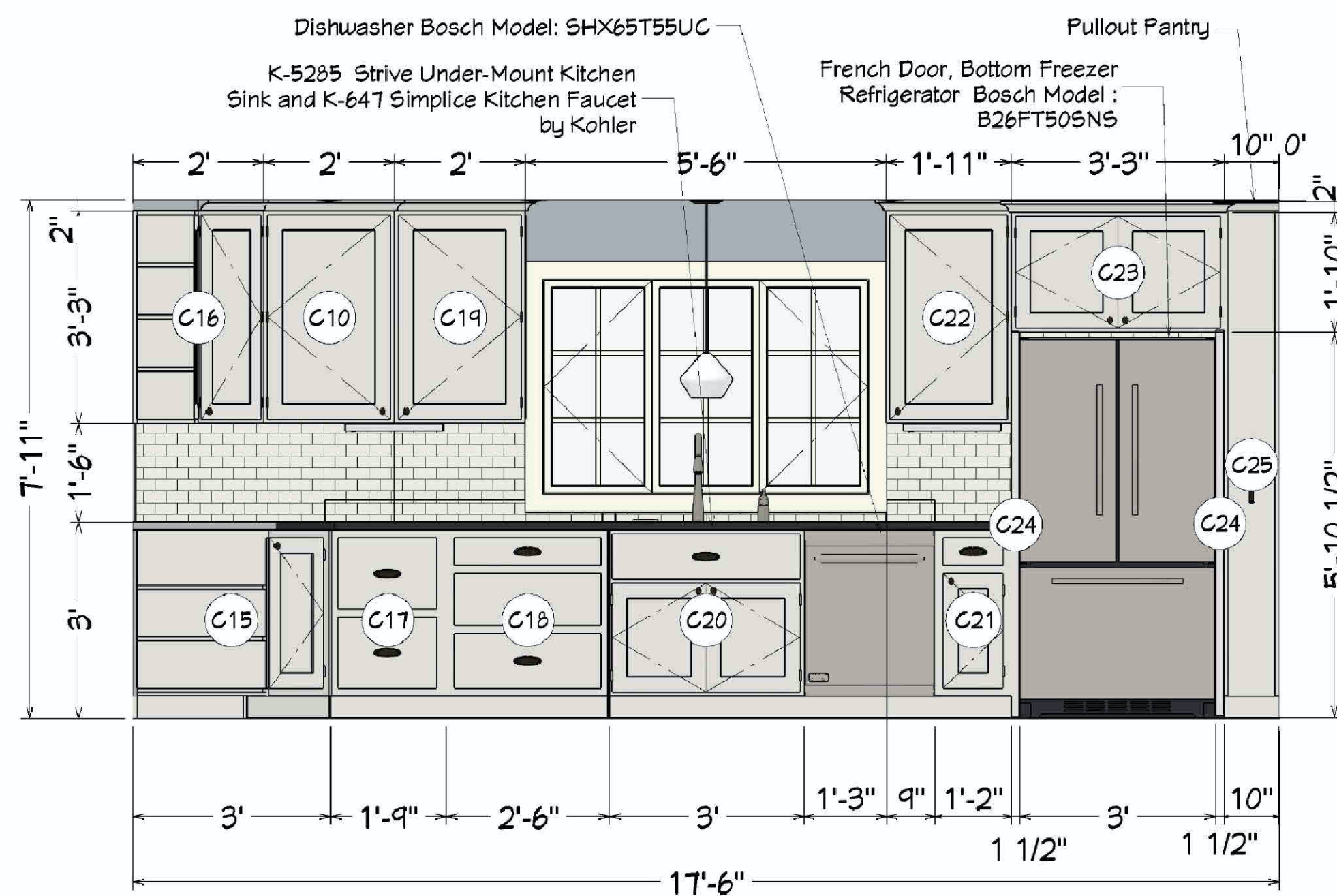
NUMBER	LABEL	ROOM NAME	QTY	WIDTH	DEPTH	HEIGHT	DESCRIPTION
C01	2DB24	KITCHEN	1	24"	24"	36"	BASE CABINET
C02	1DB2736	KITCHEN	1	27"	24"	36"	BASE CABINET
C03	2DB30	KITCHEN	1	30"	24"	36"	BASE CABINET
C04	1DB24	KITCHEN	3	24"	24"	36"	BASE CABINET
C05	B3348	KITCHEN	1	33"	48"	36"	BASE CABINET
C08	U302493	KITCHEN	1	30"	24"	93"	UTILITY CABINET
C09	3DB24	KITCHEN	1	24"	24"	36"	BASE CABINET
C10	W2439L	KITCHEN	2	24"	12"	39"	WALL CABINET
C11	RB39	KITCHEN	1	39"	24"	36"	BASE CABINET
C12	1DB10	KITCHEN	1	10"	24"	36"	BASE CABINET
C13	W1D939	KITCHEN	1	9"	12"	39"	WALL CABINET
C14	W3639R	KITCHEN	1	36"	12"	39"	WALL CABINET
C15	DCB36R	KITCHEN	1	36"	36"	36"	CORNER BASE CABINET
C16	DCW2439R	KITCHEN	1	24"	24"	39"	CORNER WALL CABINET
C17	2DB21	KITCHEN	1	21"	24"	36"	BASE CABINET
C18	3DB30	KITCHEN	1	30"	24"	36"	BASE CABINET
C19	W2439R	KITCHEN	1	24"	12"	39"	WALL CABINET
C20	SB36	KITCHEN	1	36"	24"	36"	BASE CABINET
C21	B14R	KITCHEN	1	14"	24"	36"	BASE CABINET
C22	W2339R	KITCHEN	1	23"	12"	39"	WALL CABINET
C23	W392224R	KITCHEN	1	39"	24"	22"	WALL CABINET
C24		KITCHEN	2	1 1/2"	24"	70 3/4"	UTILITY CABINET
C25	U102493	KITCHEN	1	10"	24"	93"	UTILITY CABINET
C26	FHB24L	KITCHEN	2	24"	24"	36"	BASE CABINET
C27	3DB23	KITCHEN	1	23"	24"	36"	BASE CABINET
C28	FHB24R	KITCHEN	2	24"	24"	36"	BASE CABINET
C29	SB28	KITCHEN	1	28"	24"	36"	BASE CABINET
C30	W2433L	KITCHEN	1	24"	12"	33"	WALL CABINET
C31	W2433R	KITCHEN	1	24"	12"	33"	WALL CABINET
C32	W7269	MUDROOM	2	72"	12"	69"	WALL CABINET
C33	B241824	MUDROOM	6	24"	18"	24"	BASE CABINET

ELECTRICAL SCHEDULE

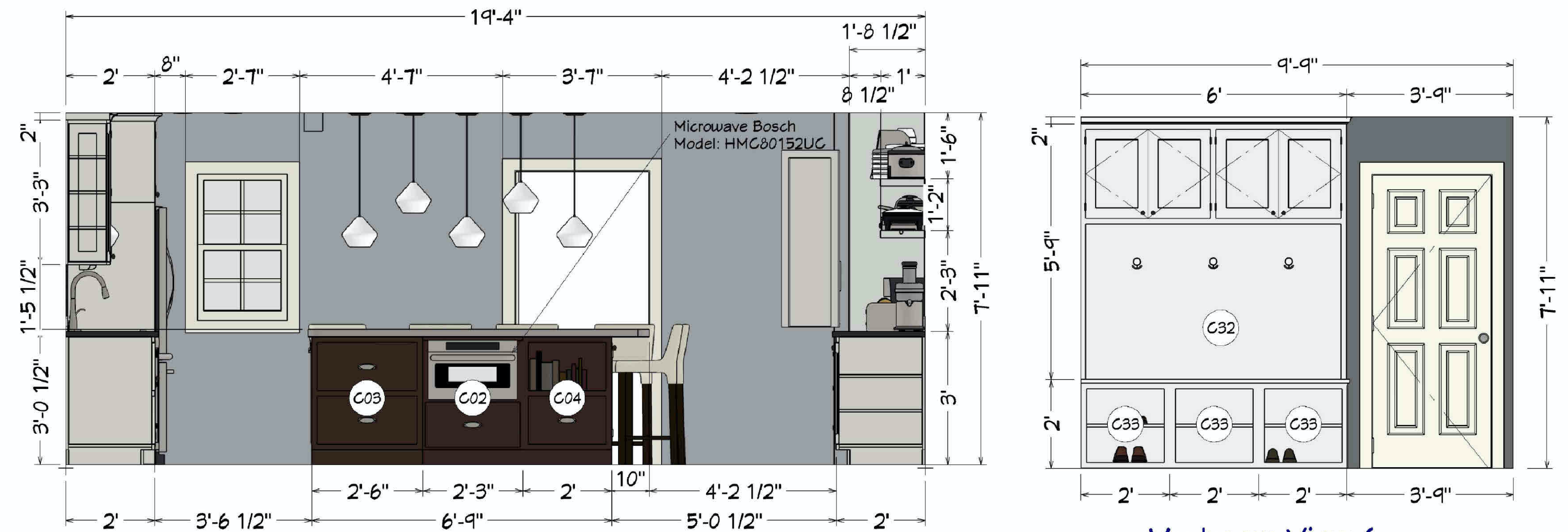
NUMBER	QTY	ROOM NAME	WIDTH	DEPTH	HEIGHT	ATTACHED TO	DESCRIPTION
E01	2	CLOSET	4 13/16"	4 13/16"	3/16"	CEILING	RECESSED DOWN LIGHT 4
E02	4	MUDROOM	4 13/16"	4 13/16"	3/16"	CEILING	RECESSED DOWN LIGHT 4
E03	3	KITCHEN	18"	13/16"	1 1/4"		TUBE
E04	4	KITCHEN	18"	4 5/8"	1 1/2"		ROUNDED
E06	2	KITCHEN	9 1/2"	9 1/2"	27"	CEILING	NEO PENDANT
E07	4	KITCHEN	9 1/2"	9 1/2"	36 1/4"	CEILING	NEO PENDANT
E09	12	KITCHEN	4 13/16"	4 13/16"	3/16"	CEILING	RECESSED DOWN LIGHT 4

DOOR SCHEDULE

NUMBER	LABEL	QTY	ROOM NAME	SIZE	WIDTH	HEIGHT	R/O	DESCRIPTION	HEADER	THICKNESS
D01	3068	1	KITCHEN/MUDROOM	3068 R	36"	80"		74"X82 1/2"	POCKET-DOOR P04	2X6X17" (2) 1 3/8"
D02	2668	1	MUDROOM/CLOSET	2668 R IN	30"	80"		32"X82 1/2"	HINGED-DOOR P04	2X6X35" (2) 1 3/8"
D03	5440	1	KITCHEN	5440 L/R	64"	48"		66"X50 1/2"	4 DR. BIFOLD-PANEL	1 3/8"

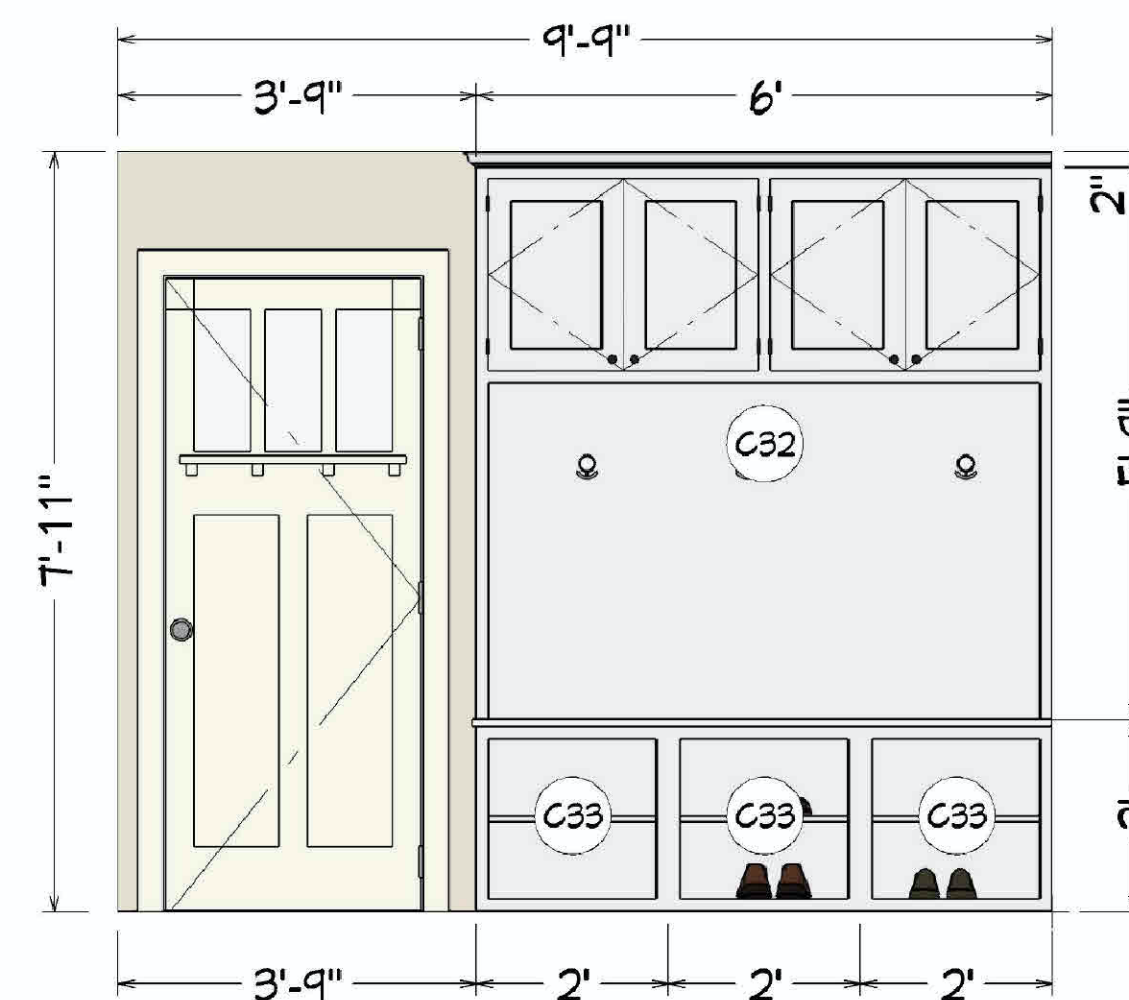


Kitchen View 3

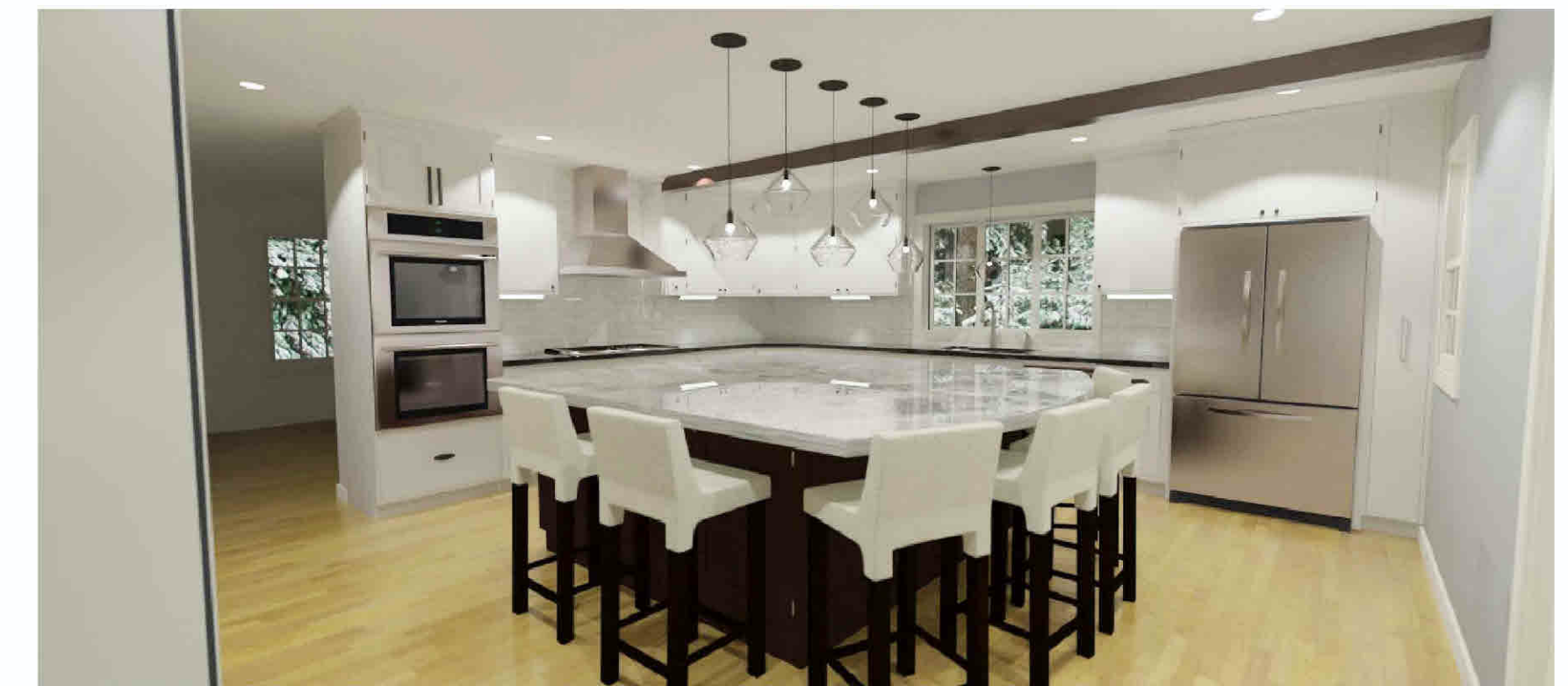


Kitchen View 5

Mudroom View 6



Mudroom View 7



Kitchen Renderings

NUMBER	DATE	REVISION	DESCRIPTION

Schedules & Cross Sections

DRAWINGS PROVIDED BY:
Home Design Consulting

DATE:

SCALE:

SHEET:

D-2